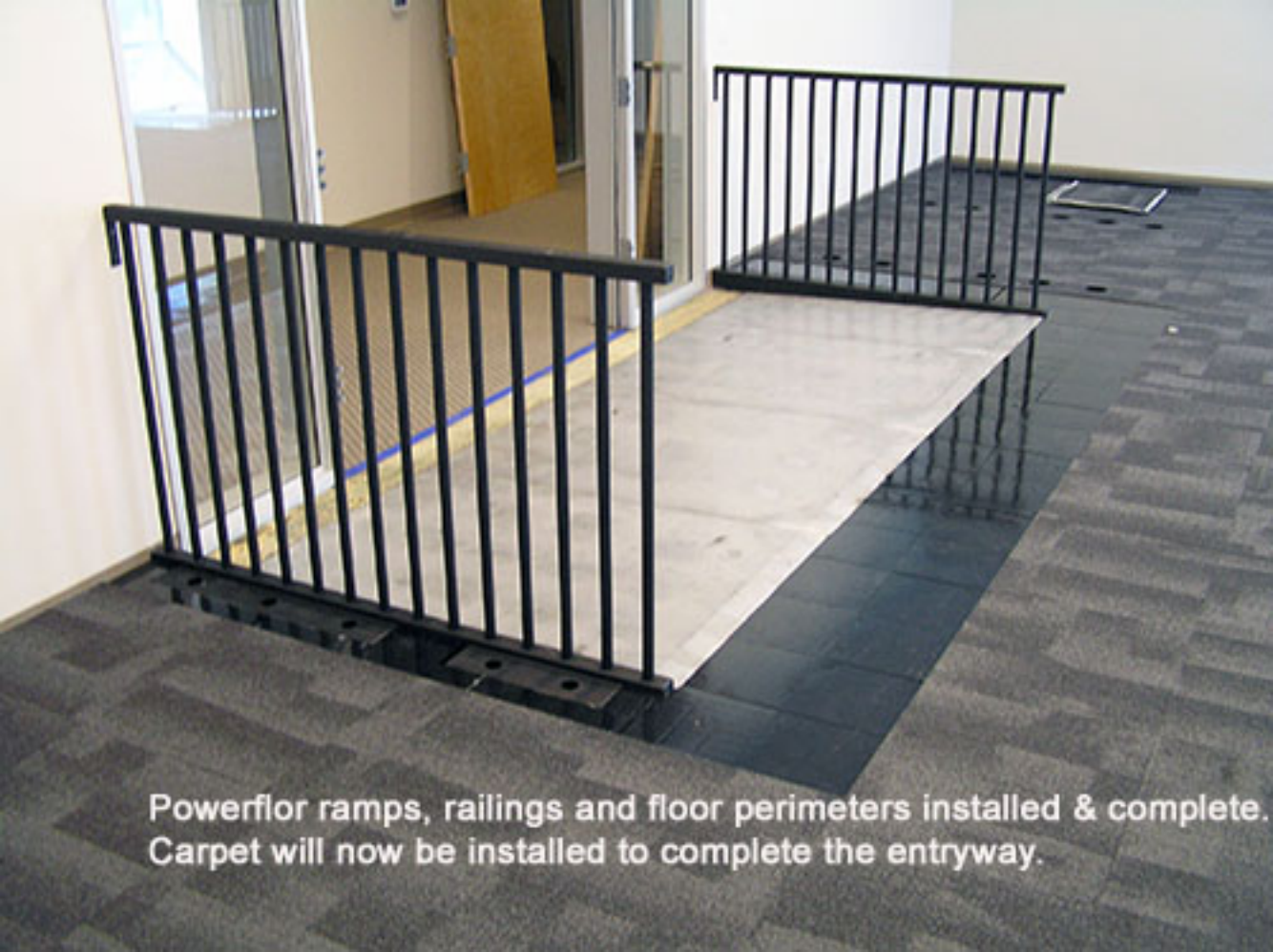


Powerflor 1:12 sloped ramps & railings installed in front of double wide door with full height windows on both sides.





Powerflor railings installed using concrete anchors. Perimeter panels will fill in open space around the ramps and railings prior to installing carpet.



Powerflor ramps, railings and floor perimeters installed & complete.
Carpet will now be installed to complete the entryway.